

Latches with draw bail

Item description/product images



Description

Material:

Steel or stainless steel 1.4301.

Version:

Electro zinc-plated, thick-film passivated and sealed with Top Coat.

Stainless steel bright.

Note:

Latches with draw bail for securing and locking hatches, container lids, machine cladding etc. By exceeding the dead centre they resist vibration.

The locking force is applied by drawing on the bail.

The latches can be screwed down or riveted. We recommend using countersunk screws for fastening the components.

Order catch plates separately.

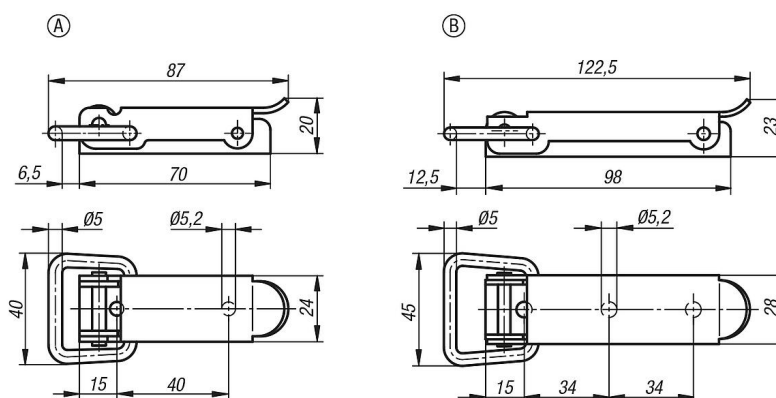
On request:

Lockable version with padlock bracket.

Accessory:

Catch plate K2358.

Drawings



Overview of items

Latches with draw bail

Order No.	Main material	Form
K2358.1520871	steel	A
K2358.1520872	stainless steel	A
K2358.2521221	steel	B
K2358.2521222	stainless steel	B

Order No.	Item	Version 1	Version 2	Form definition
K2358.1520871	Latch	with draw bail	fastening holes covered	-

Latches with draw bail

Overview of items

Order No.	Item	Version 1	Version 2	Form definition
K2358.1520872	Latch	with draw bail	fastening holes covered	-
K2358.2521221	Latch	with draw bail	fastening holes covered	-
K2358.2521222	Latch	with draw bail	fastening holes covered	-