

Latches with draw bail

Item description/product images



Description

Material:

Steel or stainless steel 1.4301.

Version:

Electro zinc-plated, thick-film passivated and sealed with Top Coat.

Stainless steel bright.

Note:

Latches with draw bail for securing and locking hatches, container lids, machine cladding etc. By exceeding the dead centre they resist vibration.

The locking force is applied by drawing on the bail.

The latches can be screwed down or riveted. We recommend using countersunk screws for fastening the components.

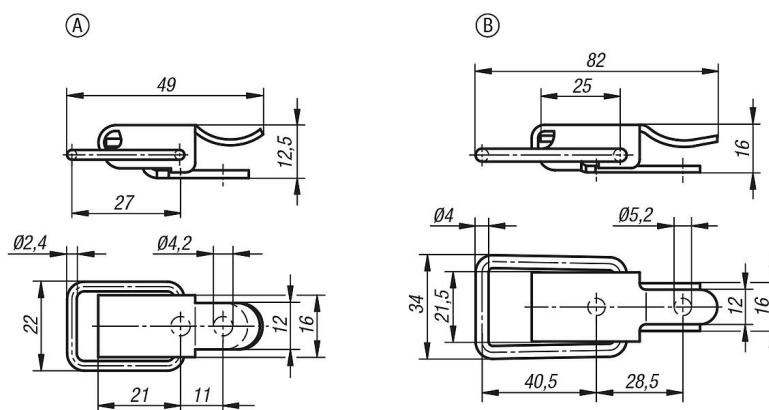
Order catch plates separately.

Accessory:

Catch plate K2356.

Catch plate K2357.

Drawings



Overview of items

Latches with draw bail

Order No.	Main material	Form	Retaining force F1 N
K2357.1420491	steel	A	250
K2357.1420492	stainless steel	A	250
K2357.2520821	steel	B	300
K2357.2520822	stainless steel	B	300

Latches with draw bail

Overview of items
