

## Levelling feet plates steel

### Item description/product images



#### Description

**Material:**

Steel.

**Version:**

Painted yellow or black phosphated.

**Note:**

Levelling feet consist of a plate and a hollow screw.

The matching hollow screw must be selected based on the inside diameter D1.

The maximum static load is taken up by the hollow screws.

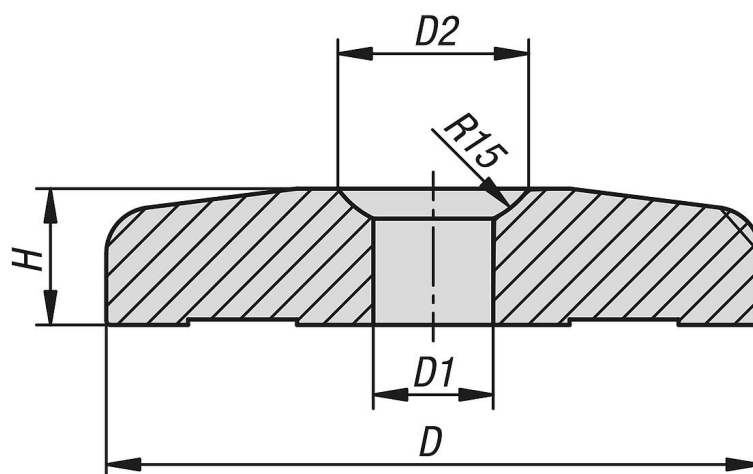
**On request:**

Other dimensions.

**Accessory:**

Hollow screw K2346.

### Drawings



### Overview of items

#### Levelling feet plates steel

Order No.	Surface finish body	Main colour	D	D1	D2	H
K2347.1110013	painting	daffodil yellow RAL 1007	100	13	21,5	18
K2347.1112022	painting	daffodil yellow RAL 1007	120	22	35	25
K2347.1115022	painting	daffodil yellow RAL 1007	150	22	35	25
K2347.1210013	phosphated	black	100	13	21,5	18
K2347.1212022	phosphated	black	120	22	35	25
K2347.1215022	phosphated	black	150	22	35	25

