

## Positioning pins cylindrical, ground

### Item description/product images

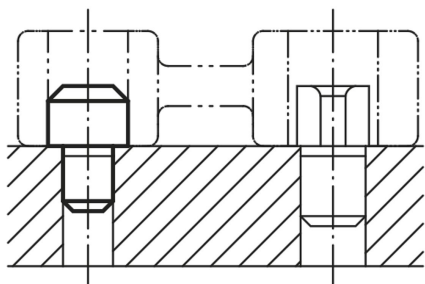


### Description

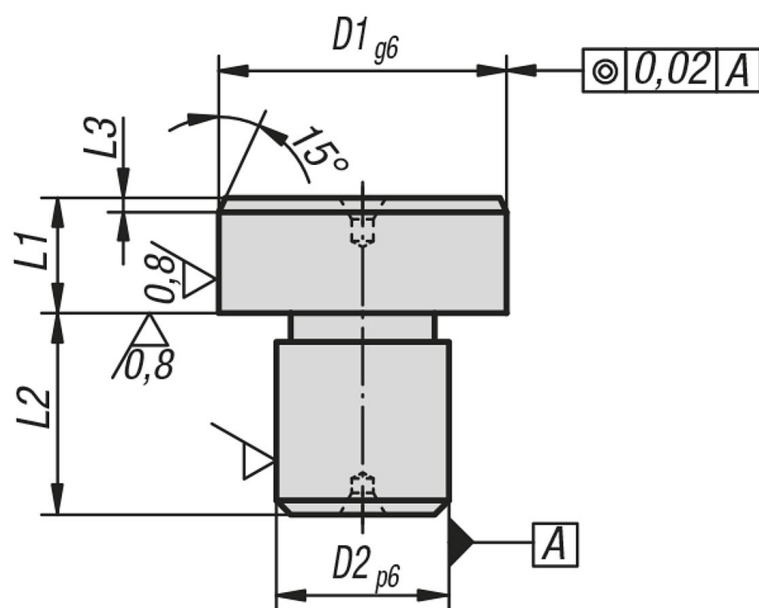
**Material:**  
Tool steel.

**Version:**  
Hardened and ground.

**Note:**  
Top face with centrebore.



### Drawings



### Overview of items

#### Cylindrical positioning pins, ground

| Order No. | D1 | D2 | L1 | L2 | L3 |
|-----------|----|----|----|----|----|
| K0352.05  | 8  | 5  | 8  | 8  | 2  |
| K0352.07  | 10 | 7  | 8  | 8  | 2  |
| K0352.08  | 12 | 8  | 8  | 10 | 2  |
| K0352.081 | 14 | 8  | 8  | 10 | 3  |
| K0352.09  | 16 | 9  | 8  | 12 | 3  |
| K0352.12  | 18 | 12 | 8  | 12 | 3  |
| K0352.121 | 20 | 12 | 8  | 14 | 3  |

**Positioning pins cylindrical, ground****Overview of items**

| Order No. | D1 | D2 | L1 | L2 | L3 |
|-----------|----|----|----|----|----|
| K0352.14  | 22 | 14 | 8  | 14 | 3  |
| K0352.16  | 25 | 16 | 8  | 16 | 3  |