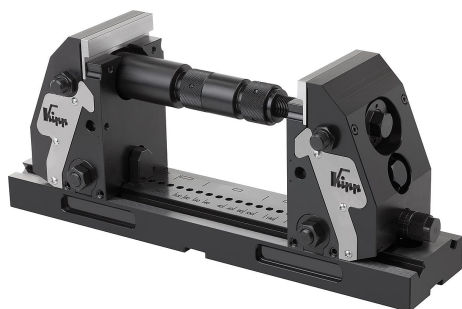
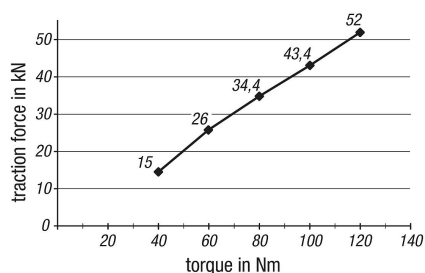


## 5-axis clamping system compact smooth vice jaws

### Item description/product images



Tractive force 5-axis clamping system compact



### Description

#### Material:

Base plate and jaw hardened steel.  
Vice jaws tool steel.

#### Version:

Jaws black oxidised.  
Jaw plates bright.

#### Note:

The easy operability and rapid adjustment using a scale means that the clamping jaws can be quickly and surely adapted to new workpieces.  
The workpiece is always centred through the systematic construction of the 5-axis compact clamping system.  
The optimal accessibility to the workpiece allows short, standard tooling to be used. Tooling costs are significantly reduced.

Positive down force by a clamping depth of >5 mm.  
Clamping widths of 20 mm to 320 mm are possible.

#### Assembly:

The 5-axis clamping system compact can be mounted on T-slot tables, grid systems or, using an adapter flange on conventional zero-point clamping systems.

#### Supplied with:

Baseplate K0994  
Clamping jaw K0976  
Extension shaft K0990.060  
Extension shaft K0990.120  
Adapter shaft K0991.060  
Adapter shaft K0991.120  
Threaded spindle K0940.999.002  
Spindle nut K0940.999.003

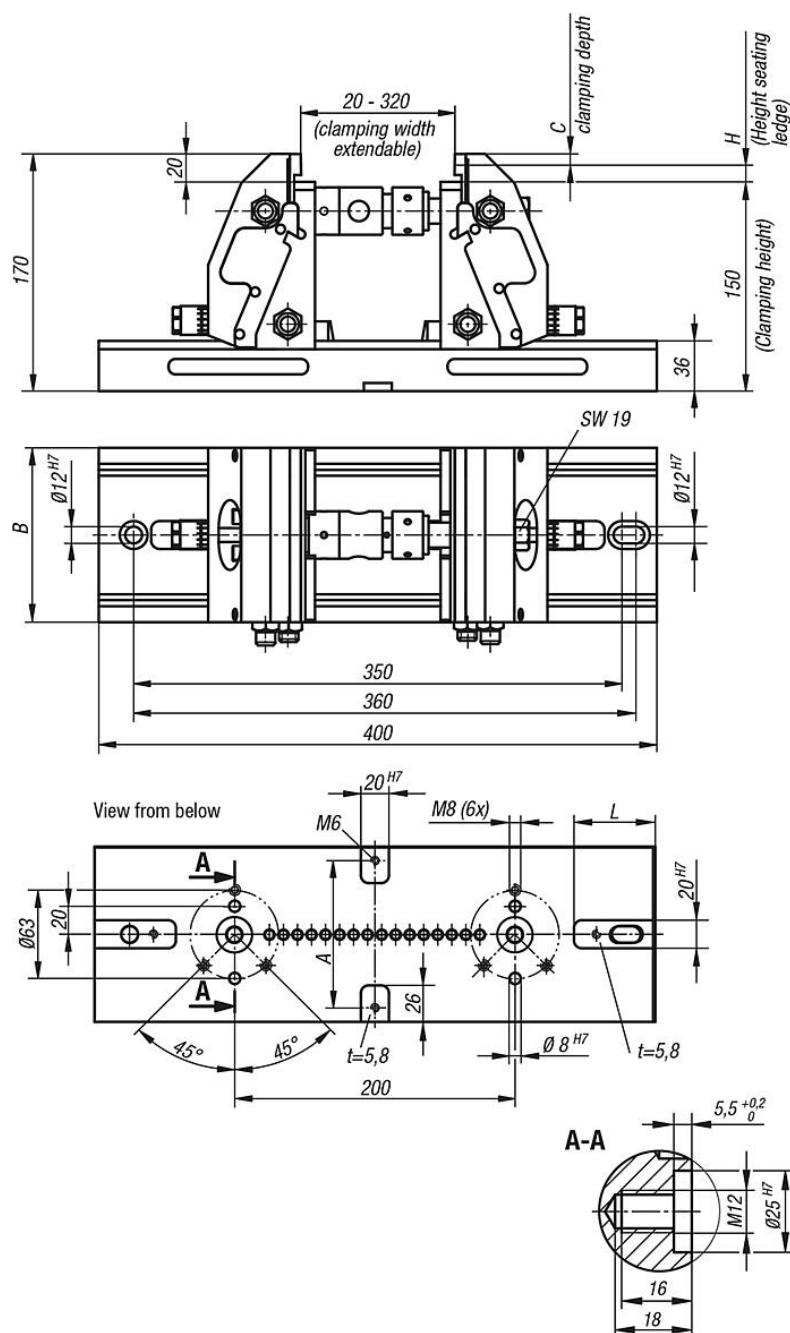
#### Accessory:

Seating ledges K0974  
Jaw plates K0975  
Pendulum jaws K0988  
Centre jaws K0987  
Coupling for cross-clamping K0992

Order the seating ledges and jaw plates with pins separately.

# 5-axis clamping system compact smooth vice jaws

## Drawings



## Overview of items

### 5-axis clamping system compact, smooth vice jaws

Order No.	A	B	C	H	L	Tractive force max. kN	Suitable shoulder screw	weight kg
K0973.124000901500	70	90	8/3	12/17	57,5	see diagram	K0815.12055	21,96
K0973.124001251500	105	125	8/3	12/17	58	see diagram	K0815.12055	30,16

## 5-axis clamping system compact smooth vice jaws

### Overview of items

---